

Date: 2/6/2025

The data represented on this map was obtained with the best methods available. Data is supplied from various sources and accuracy may be out of the City of Rockwall's control. The verification of accuracy and / or content lies entirely with the end user. The City of Rockwall does not guarantee the accuracy of contained information. All information is provided 'As Is' with no warranty being made, either expressed or implied.

Rockwall Airport



The data represented on this map was obtained with the best methods available. Data is supplied from various sources and accuracy may be out of the City of Rockwall's control. The verification of accuracy and / or content lies entirely with the user. Rockwall does not guarantee the accuracy of contained information, all use is "As Is" with no warranty being made, either expressed or implied.



Date: 2/6/2025

Airport Rd ROW





Discovery Blvd

Discovery Blvd

RTT  
Engineered  
Solutions

Corporate Crossing

FLO  
man

Springer Rd

Church of His  
Glory

Subway  
Gateway

Sonic

276

276

Long Branch



City of  
Rockwall



Date: 2/6/2025

The data represented on this map was obtained with the best methods available. Data is supplied from various sources and accuracy may be out of the City of Rockwall's control. The verification of accuracy and / or content lies entirely with the end user. The City of Rockwall does not guarantee the accuracy of contained information. All information is provided 'As Is' with no warranty being made, either expressed or implied.

Corporate Crossing  
SH 276 to Discovery Blvd



Buffalo Creek

Capital Blvd

Capital Blvd

SCP Distribution Center

Corporate Crossing

Lollicup

Technology Way

Lime Media

Observation Trl

L3Harris

Science Pl

L3Harris

Science Pl

Discovery Blvd

Discovery Blvd

Discovery Blvd



City of Rockwall



Date: 2/6/2025

The data represented on this map was obtained with the best methods available. Data is supplied from various sources and accuracy may be out of the City of Rockwall's control. The verification of accuracy and / or content lies entirely with the end user. The City of Rockwall does not guarantee the accuracy of contained information. All information is provided 'As Is' with no warranty being made, either expressed or implied.

Corporate Crossing  
Capital Blvd to Discovery Blvd



Date: 2/6/2025

The data represented on this map was obtained with the best methods available. Data is supplied from various sources and accuracy may be out of the City of Rockwall's control. The verification of accuracy and / or content lies entirely with the user. City of Rockwall does not guarantee the accuracy of contained information. All information is provided 'As Is' with no warranty being made, either expressed or implied.

# Corporate Crossing @ IH30





Date: 2/6/2025

The data represented on this map was obtained with the best methods available. Data is supplied from various sources and accuracy may be out of the City of Rockwall's control. The verification of accuracy and / or content lies entirely with the end user. The City of Rockwall does not guarantee the accuracy of contained information. All information is provided 'As Is' with no warranty being made, either expressed or implied.

Corporate Crossing  
Rolling Meadows Dr to SH 66



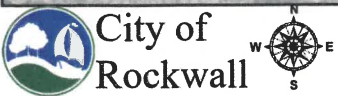
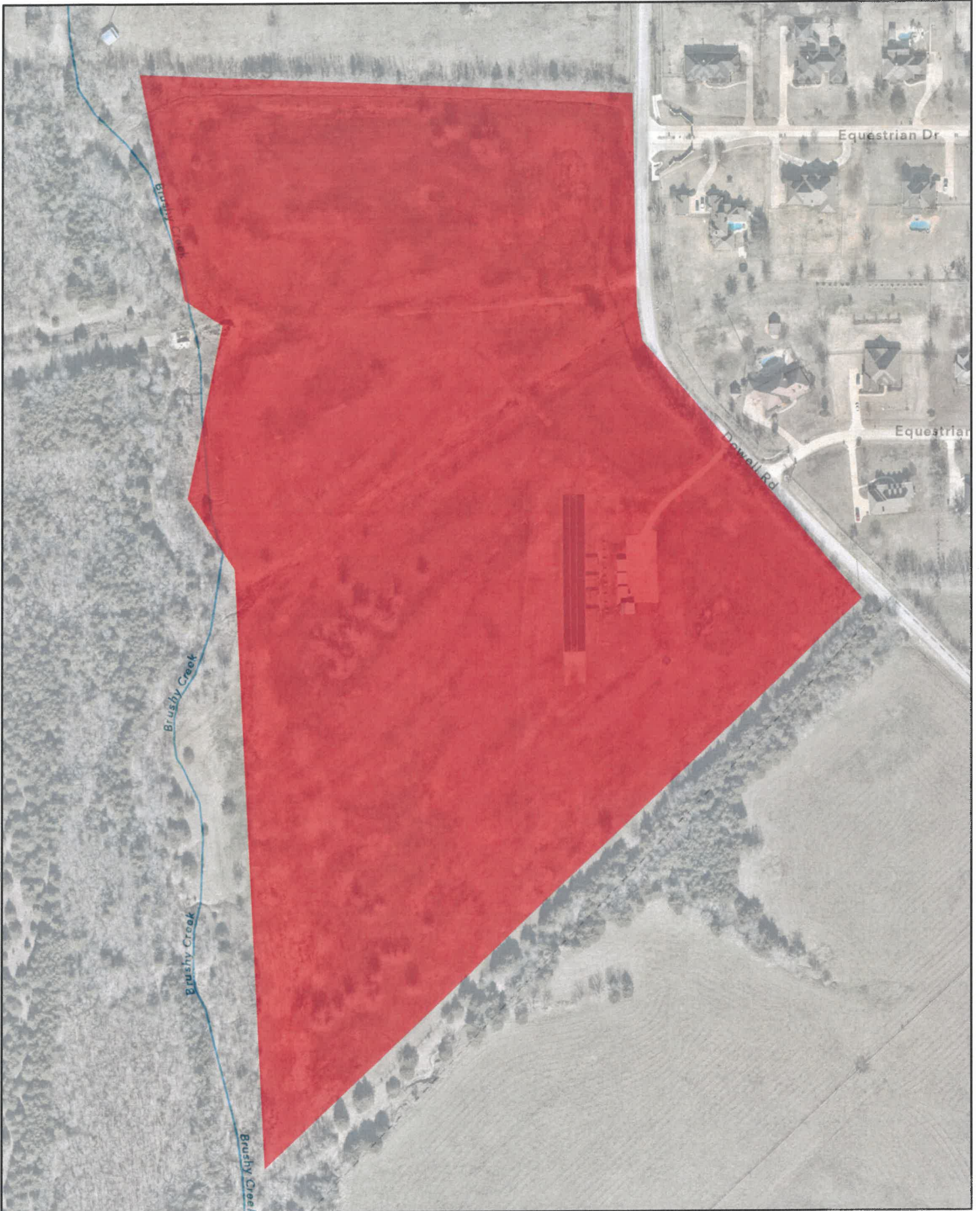


# Greens Lake Park 1141 @ Cornelius

The data represented on this map was obtained with the best methods available. Data is supplied from various sources and accuracy may be out of the City of Rockwall's control. The user assumes all responsibility for the use of the information and accuracy of contained information. All information is provided "as is" with no warranty being made, either expressed or implied.

Date: 2/6/2025





City of  
Rockwall

Date: 2/6/2025

The data represented on this map was obtained with the best methods available. Data is supplied from various sources and accuracy may be out of the City of Rockwall's control. The verification of accuracy and / or content lies entirely with the end user. The City of Rockwall does not guarantee the accuracy of contained information. All information is provided 'As Is' with no warranty being made, either expressed or implied.

Closed Landfill on Dowell  
(R/C Runway)



Discovery Blvd  
Innovation Dr to Corporate Crossing

The data represented on this map was obtained with the best methods available. Data is supplied from various sources and accuracy may be out of the City of Rockwall's control. The verification of accuracy and / or content lies entirely with the end user. The City of Rockwall does not guarantee the accuracy of this information. All information is provided "As Is" with no warranty being made, either expressed or implied.



Date: 2/6/2025



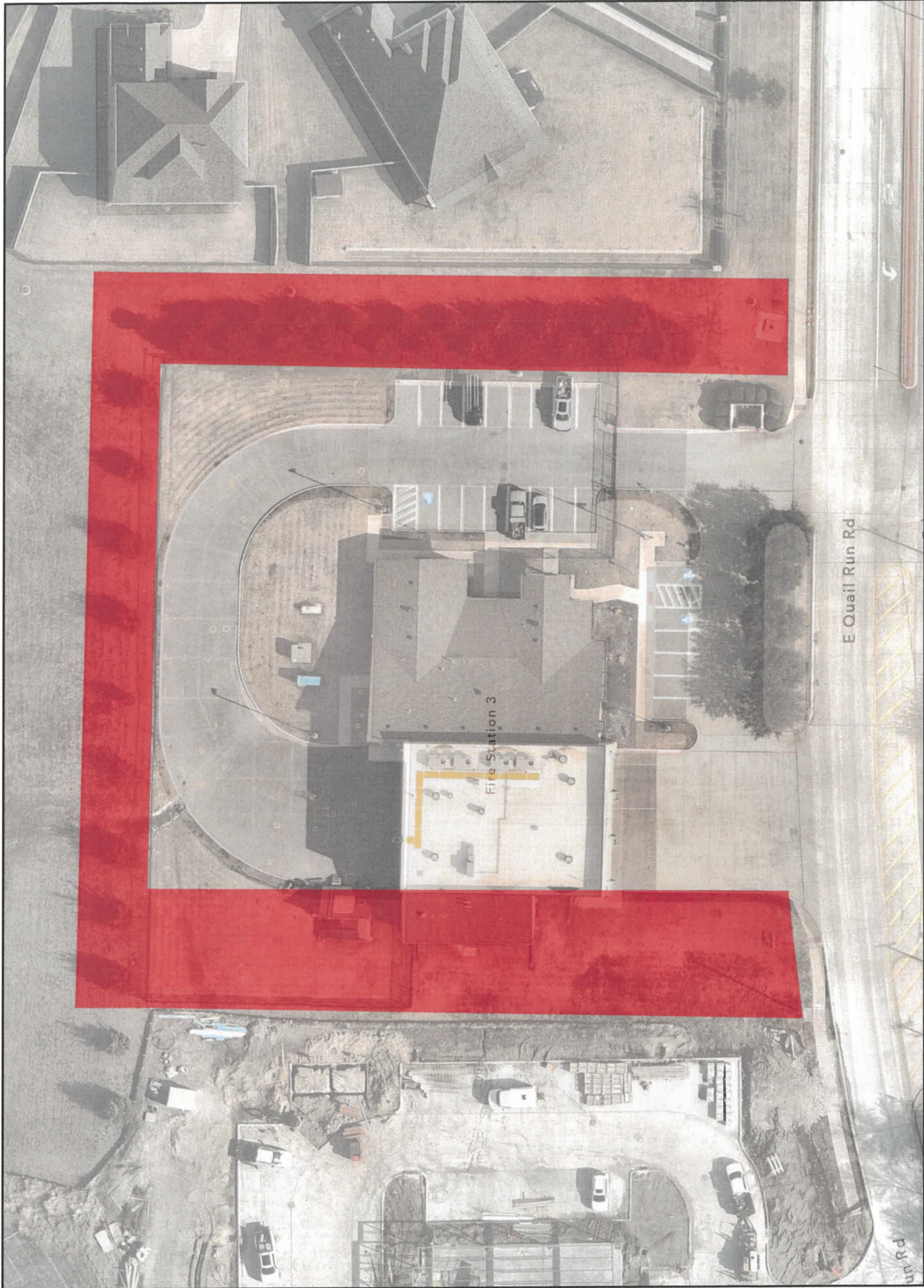
Discovery Blvd  
John King Blvd to Innovation Dr

The data represented on this map was obtained with the best methods available. Data is supplied from various sources and is not guaranteed by the City of Rockwall. The City of Rockwall does not guarantee the accuracy of contained information. All information is provided 'as is' with no warranty being made, either expressed or implied.

Date: 2/6/2025



City of  
Rockwall



Date: 2/6/2025

The data represented on this map was obtained with the best methods available. Data is supplied from various sources and accuracy may be out of the City of Rockwall's control. The verification of accuracy and / or content lies entirely with the user. The City of Rockwall does not guarantee the accuracy of the data. All data is provided "as is" with no warranty being made, either expressed or implied.

# Fire Station No. 3 Open Area



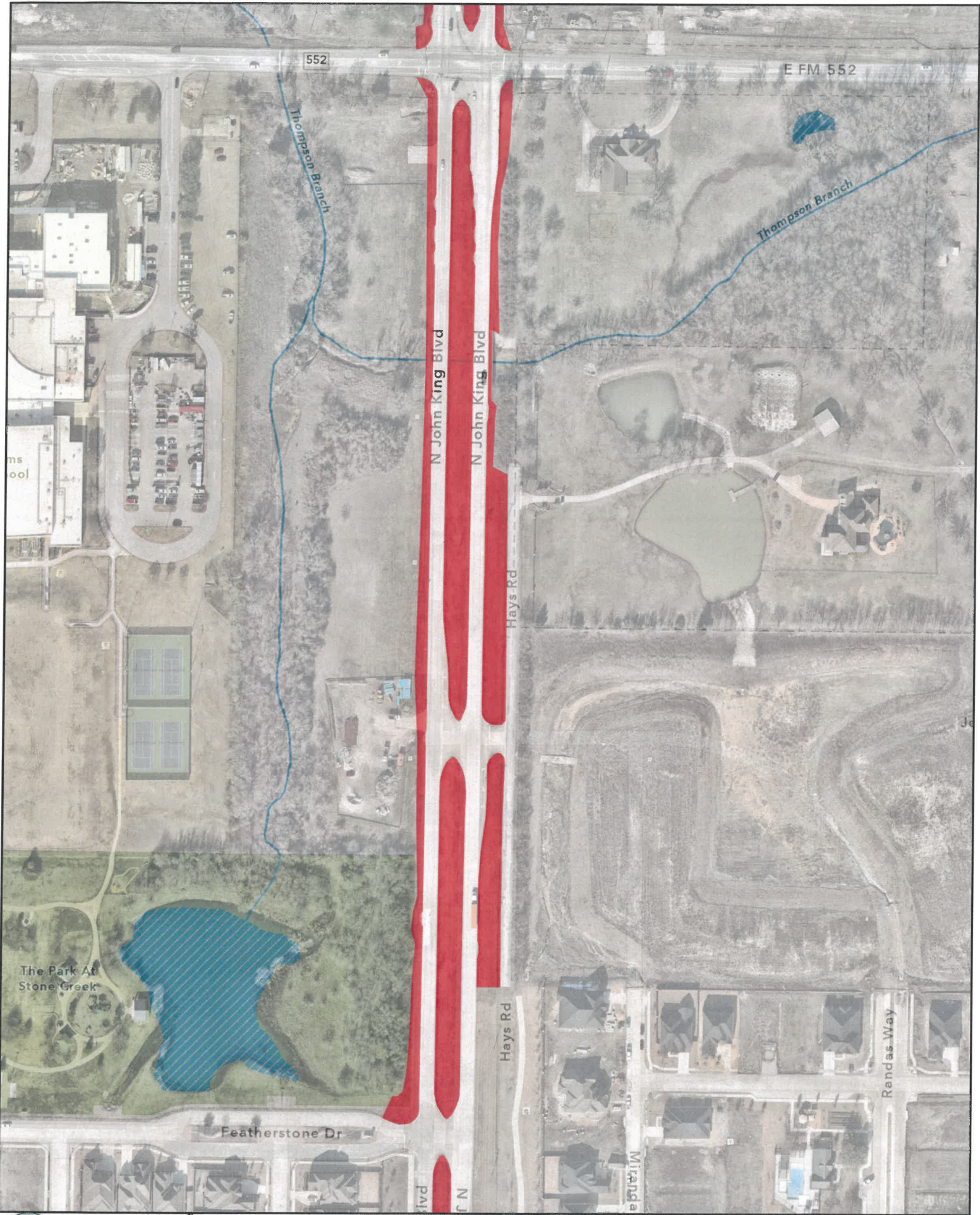
City of  
Rockwall

Date: 2/6/2025

The data represented on this map was obtained with the best methods available. Data is supplied from various sources and accuracy may be out of the City of Rockwall's control. The verification of the accuracy of any data or content is entirely with the user. The City of Rockwall does not warrant the accuracy of combined information. All information is provided 'As Is' with no warranty being made, either expressed or implied.

# Fox Chase Parking Lot





552

E FM 552

Thompson Branch

Thompson Branch

N John King Blvd

N John King Blvd

Hays Rd

Hays Rd

Randas Way

Featherstone Dr

ivd

N

Mittrid a



City of Rockwall



Date: 2/6/2025

The data represented on this map was obtained with the best methods available. Data is supplied from various sources and accuracy may be out of the City of Rockwall's control. The verification of accuracy and / or content lies entirely with the end user. The City of Rockwall does not guarantee the accuracy of contained information. All information is provided 'As Is' with no warranty being made, either expressed or implied.

John King Blvd  
FM 552 to Featherstone Dr





Date: 2/6/2025

The data represented on this map was obtained with the best methods available. Data is supplied from various sources and accuracy may be out of the City of Rockwall's control. The verification of accuracy and / or content lies entirely with the end user. The City of Rockwall does not guarantee the accuracy of contained information. All information is provided 'As Is' with no warranty being made, either expressed or implied.

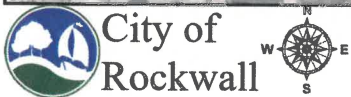
**John King Blvd  
FM 1141 to Ladera Way**











City of  
Rockwall

Date: 2/6/2025

The data represented on this map was obtained with the best methods available. Data is supplied from various sources and accuracy may be out of the City of Rockwall's control. The verification of accuracy and / or content lies entirely with the end user. The City of Rockwall does not guarantee the accuracy of contained information. All information is provided 'As Is' with no warranty being made, either expressed or implied.

John King Blvd  
Fieldcrest Dr to Fallbrook Dr

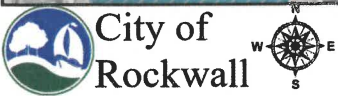
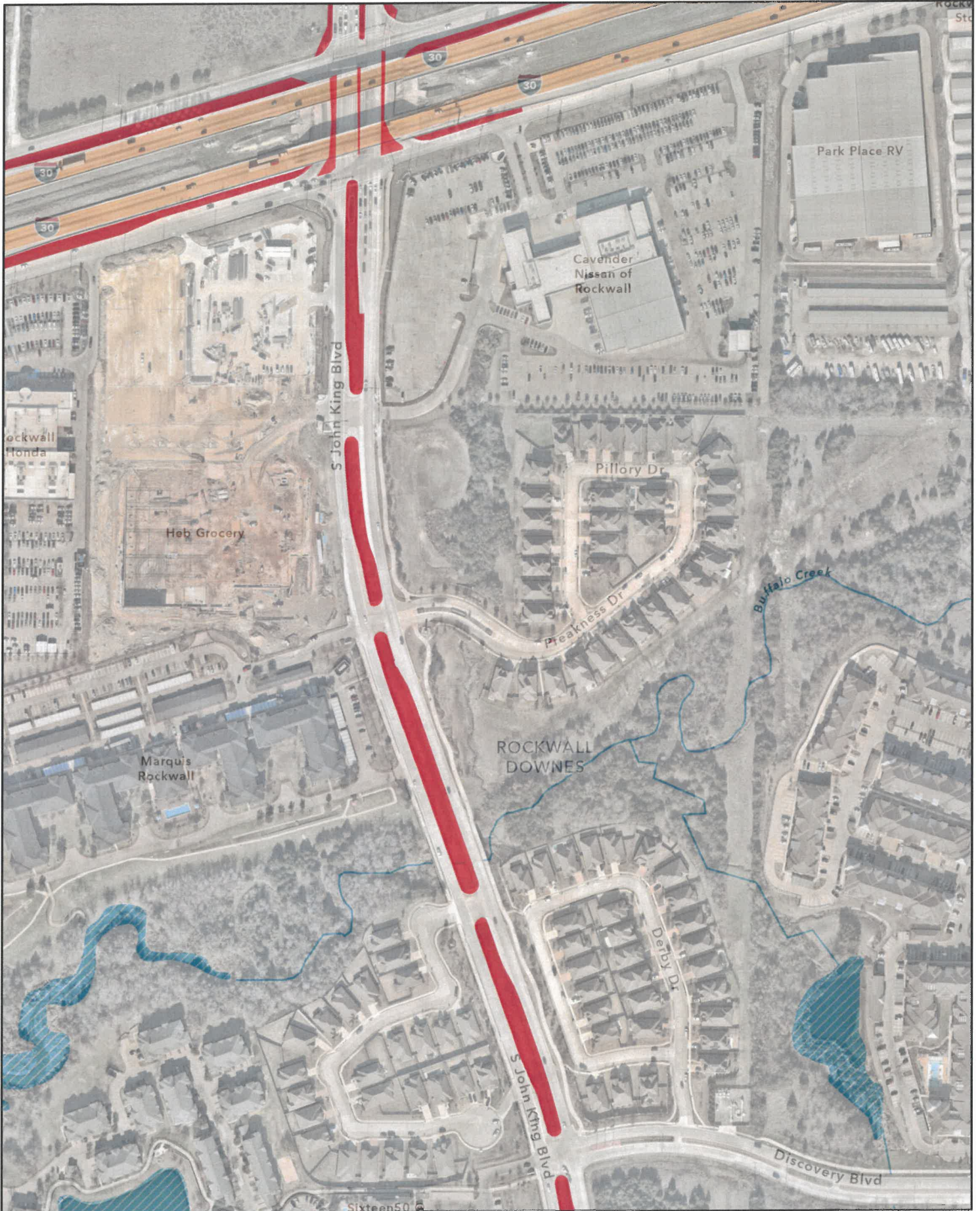


**John King Blvd  
Featherstone Dr to E Quail Run Rd**

The data represented on this map was obtained with the best methods available. Data is supplied from various sources and accuracy may be out of the City of Rockwall's control. The verification of accuracy and/or content lies entirely with the user. The City of Rockwall does not warrant the accuracy of contained information. All information is provided "AS IS" with no warranty being made, either expressed or implied.

Date: 2/6/2025



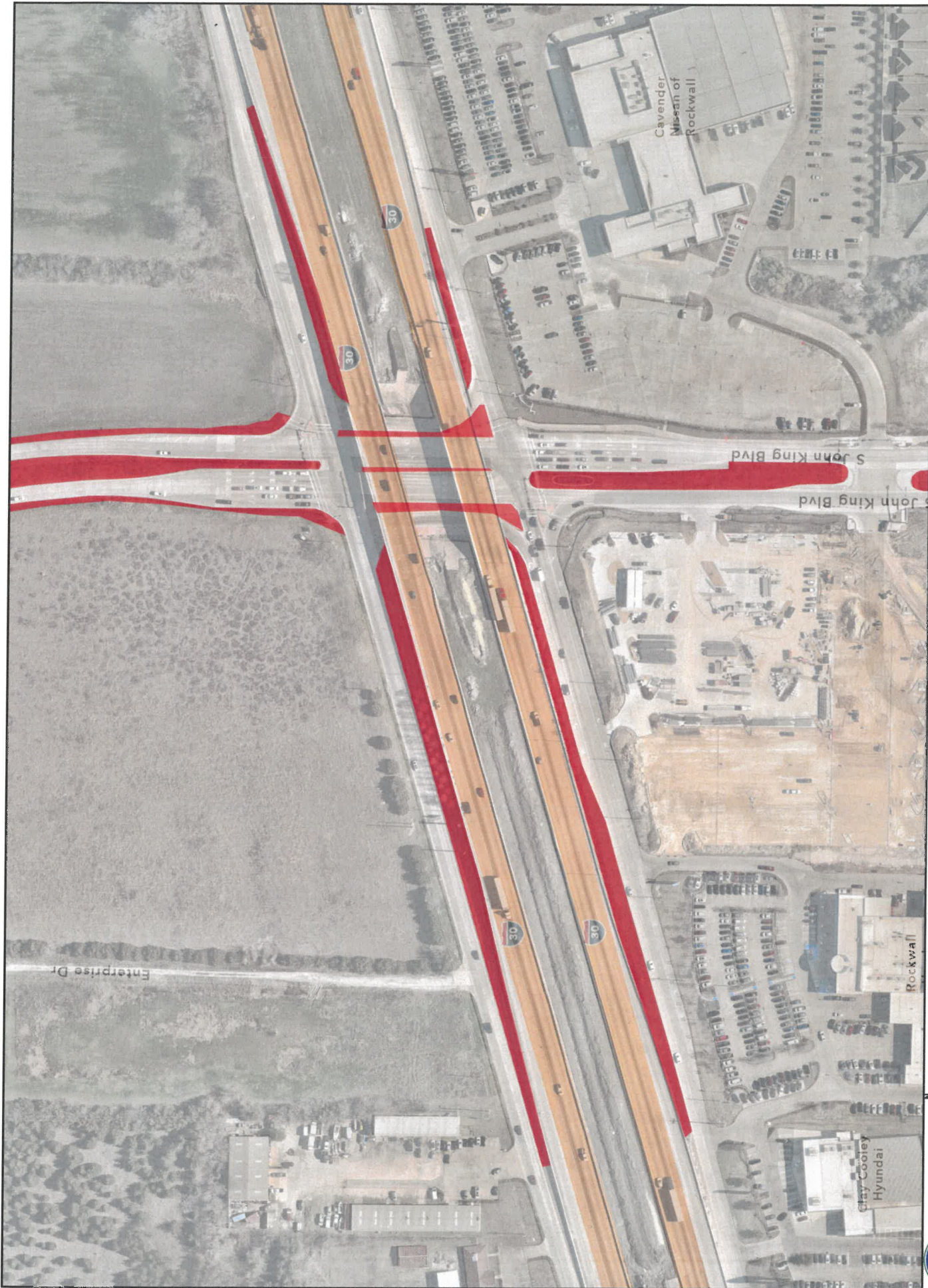


Date: 2/6/2025

The data represented on this map was obtained with the best methods available. Data is supplied from various sources and accuracy may be out of the City of Rockwall's control. The verification of accuracy and / or content lies entirely with the end user. The City of Rockwall does not guarantee the accuracy of contained information. All information is provided 'As Is' with no warranty being made, either expressed or implied.

John King Blvd  
IH30 to Discovery Blvd



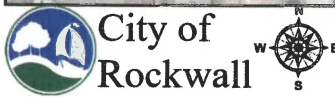


The data represented on this map was obtained with the best methods available. Data is supplied from various sources and accuracy may be out of the City of Rockwall's control. The verification of accuracy and / or content lies entirely with the user. The City of Rockwall does not guarantee the accuracy of the data represented on this map. As is with no warranty being made, either expressed or implied.



# John King Blvd John King Blvd @ IH30

Date: 2/6/2025



City of  
Rockwall

Date: 2/6/2025

The data represented on this map was obtained with the best methods available. Data is supplied from various sources and accuracy may be out of the City of Rockwall's control. The verification of accuracy and / or content lies entirely with the end user. The City of Rockwall does not guarantee the accuracy of contained information. All information is provided 'As Is' with no warranty being made, either expressed or implied.

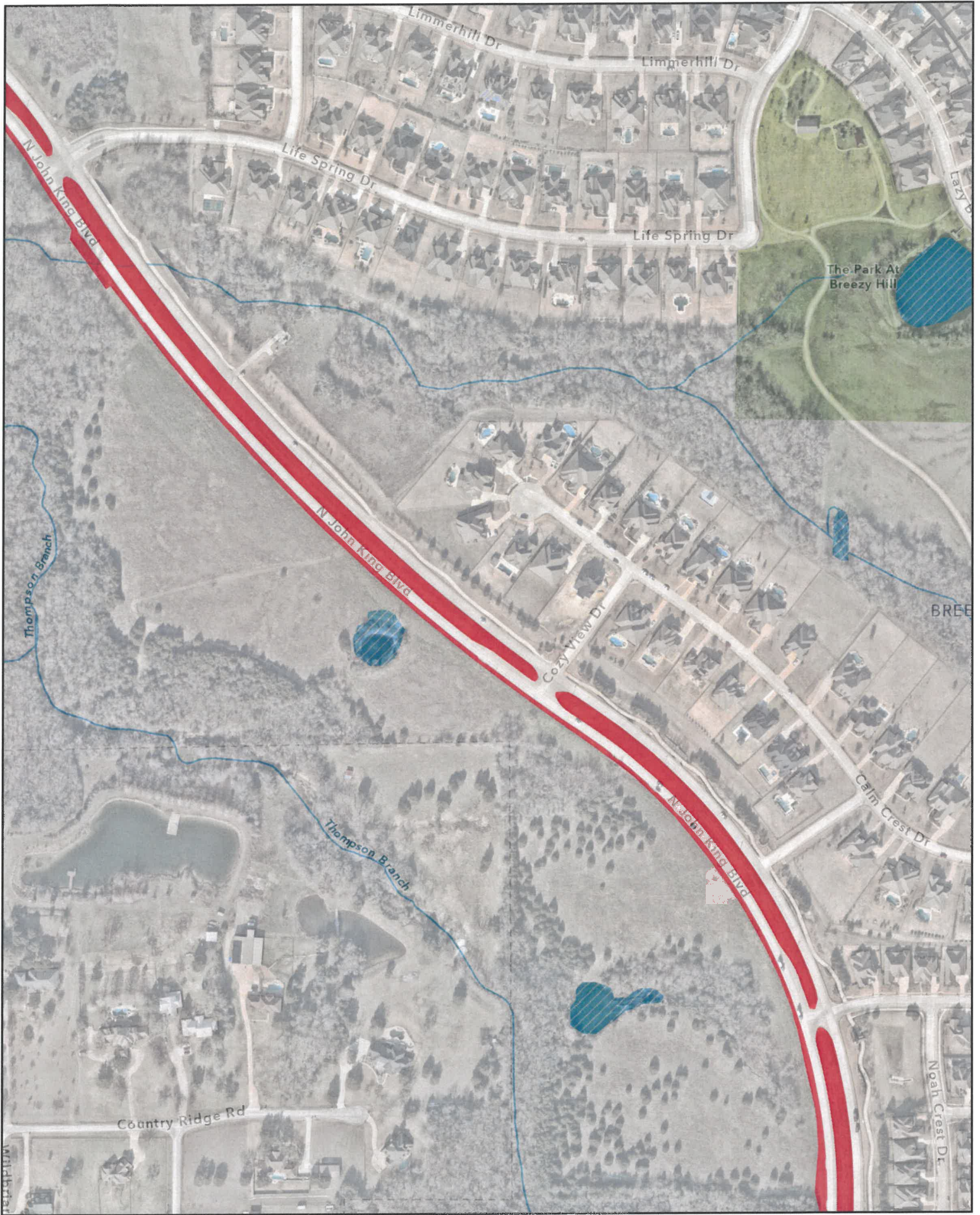
John King Blvd



Date: 2/6/2025

The data represented on this map was obtained with the best methods available. Data is supplied from various sources and accuracy may be out of the City of Rockwall's control. The verification of accuracy and / or content lies entirely with the end user. The City of Rockwall does not guarantee the accuracy of contained information. All information is provided 'as is' with no warranty being made, either expressed or implied.

John King Blvd  
Ladera Way to Park Hills Blvd















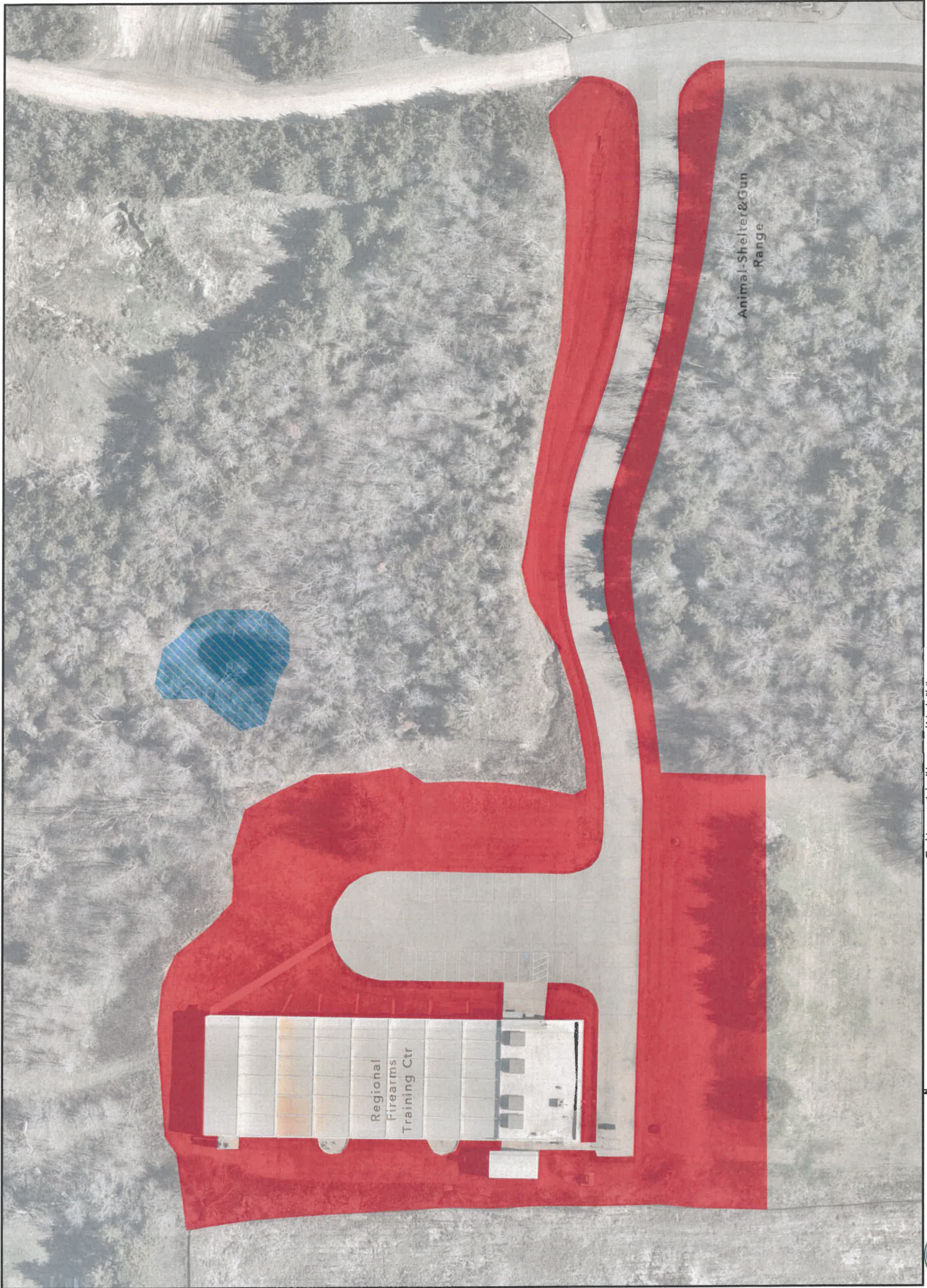
**John King Blvd  
SH 205 to Life Spring Dr**

The data represented on this map was obtained with the best methods available. Data is supplied from various sources and accuracy may be out of the City of Rockwall's control. The verification of accuracy and / or content lies entirely with the user. The City of Rockwall does not warrant the accuracy of contained information. All information is provided 'as is' with no warranty being made, either expressed or implied.

**Date: 2/6/2025**



**City of  
Rockwall**



Regional  
Firearms  
Training Ctr

Animal Shelter & Gun  
Range



City of  
Rockwall



The data represented on this map was obtained with the best methods available. Data is supplied from various sources and accuracy may be out of the City of Rockwall's control. The user assumes all liability for or against the entity with the data. The City of Rockwall does not warrant the accuracy of combined information. All information is provided 'As Is' with no warranty being made, either expressed or implied.

Date: 2/6/2025

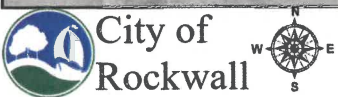
Gun Range



The data represented on this map was obtained with the best methods available. Data is supplied from various sources and accuracy may be out of the City of Rockwall's control. The City of Rockwall does not guarantee the accuracy of combined information. All information is provided 'As Is' with no warranty being made, either expressed or implied.

Date: 2/6/2025





City of  
Rockwall



Date: 2/6/2025

The data represented on this map was obtained with the best methods available. Data is supplied from various sources and accuracy may be out of the City of Rockwall's control. The verification of accuracy and / or content lies entirely with the end user. The City of Rockwall does not guarantee the accuracy of contained information. All information is provided 'As Is' with no warranty being made, either expressed or implied.

Lamar & Sherman St Lot  
(Ditch Behind Ice House)



The data represented on this map was obtained with the best methods available. Data is supplied from various sources and accuracy may be out of the City of Rockwall's control. The verification of accuracy and / or content lies entirely with the end user. The City of Rockwall does not guarantee the accuracy of the information. All necessary permits, fees or with no warranty being made, either expressed or implied.



# Lots South of City Hall

Date: 2/6/2025

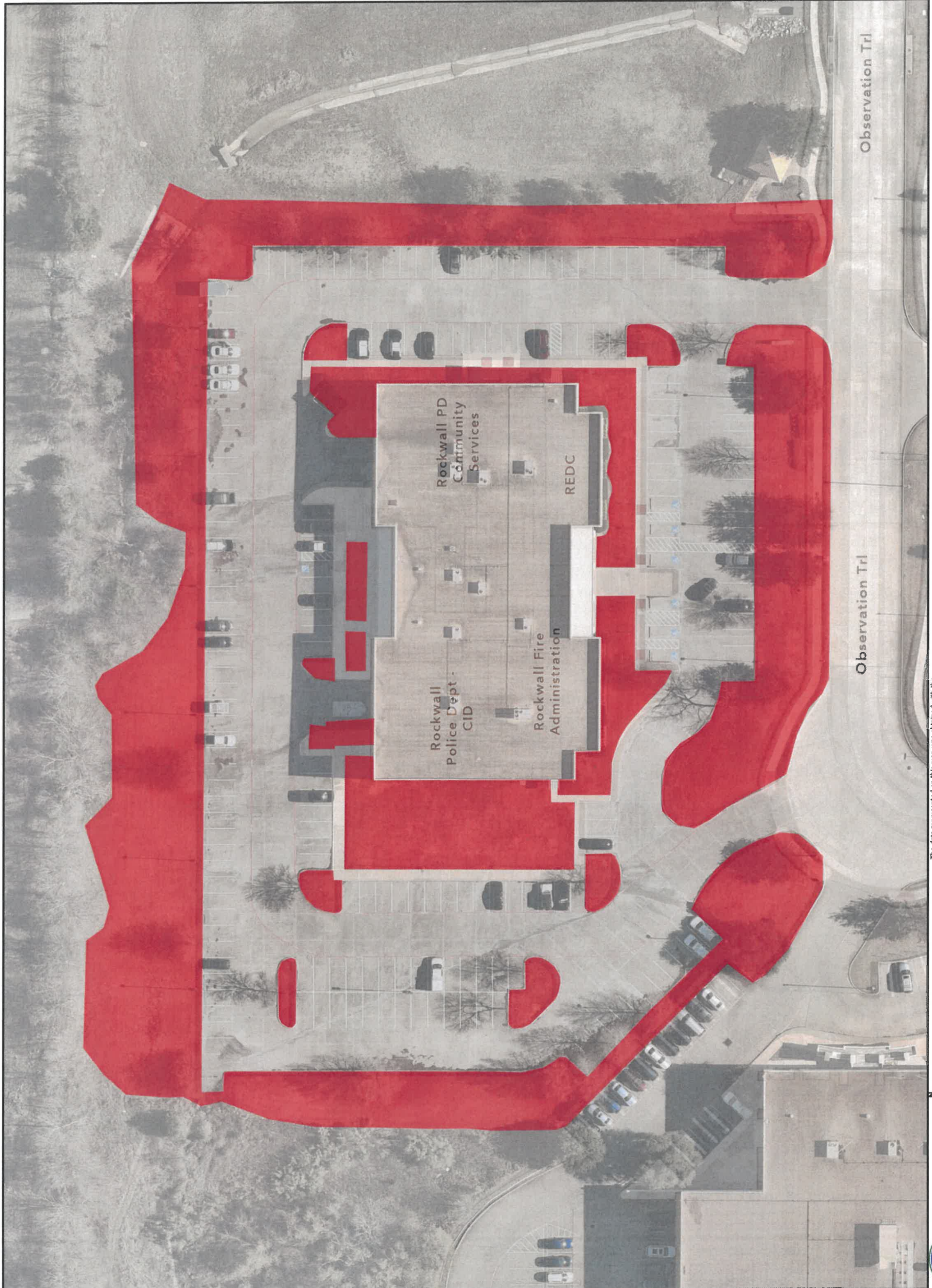


Lake Rockwall Estates  
Water Treatment Plant

The data represented on this map was obtained with the best methods available. Data is supplied from various sources and accuracy may be out of the City of Rockwall's control. The verification of accuracy and / or content lies entirely with the user. The City of Rockwall does not warrant the accuracy of contained information. All information is provided 'As Is' with no warranty being made, either expressed or implied.

Date: 2/6/2025





Date: 2/6/2025

The data represented on this map was obtained with the best methods available. Data is supplied from various sources and accuracy may be out of the City of Rockwall's control. The user assumes responsibility for content and accuracy with the exception of the City of Rockwall. The City of Rockwall does not warrant the accuracy of contained information. All information is provided 'As Is' with no warranty being made, either expressed or implied.

# 2610 Observation Trl PD South

Observation Trl

Observation Trl

Rockwall PD  
Community  
Services

REDC

Rockwall  
Police Dept  
CID

Rockwall Fire  
Administration



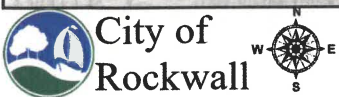
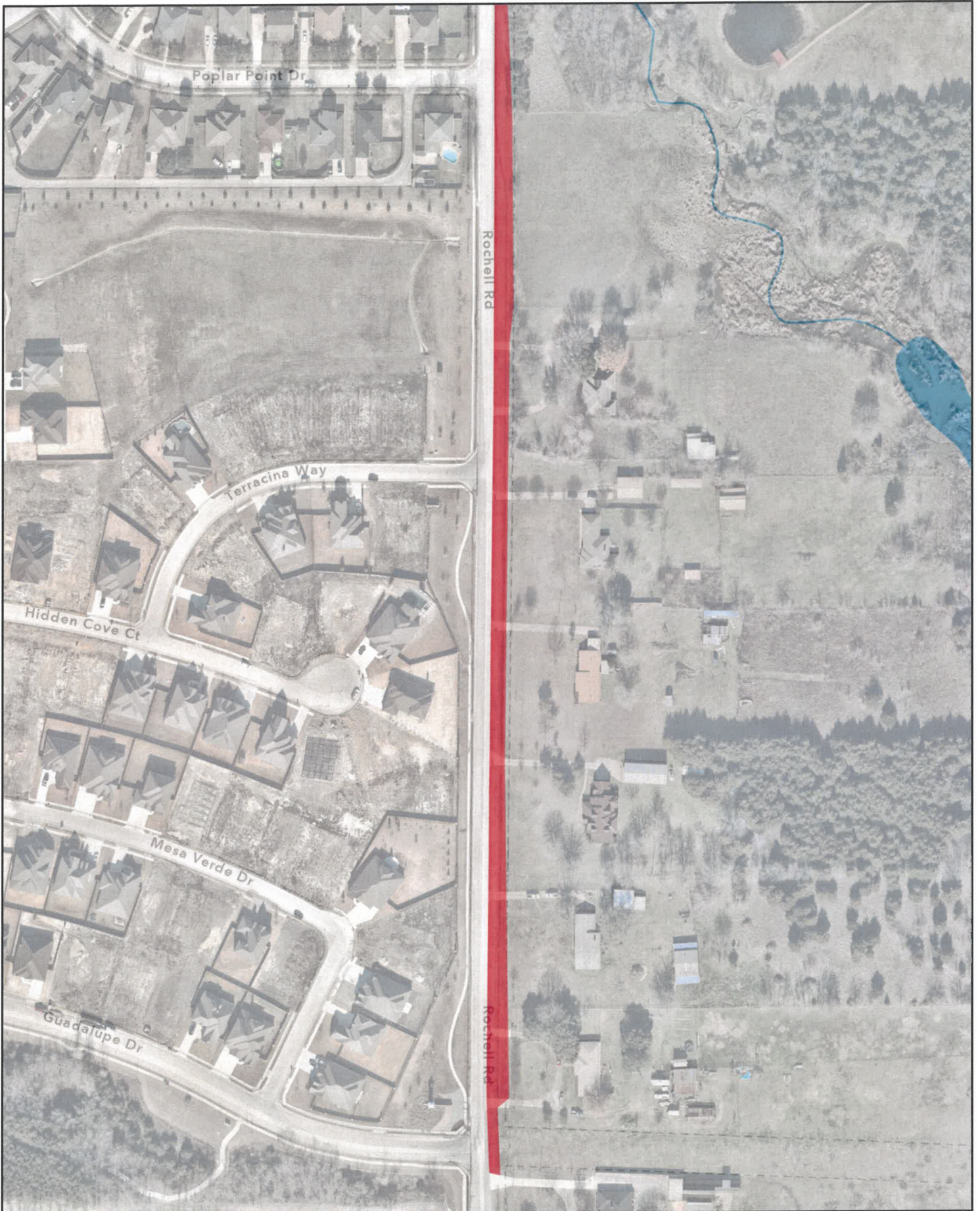
City of  
Rockwall

Date: 2/6/2025

The data represented on this map was obtained with the best methods available. Data is supplied from various sources and accuracy may be out of the City of Rockwall's control. The user assumes all responsibility for the accuracy of the information. All information is provided 'as is' with no warranty being made, either expressed or implied.

# Pecan Valley Dr Bridge (West Quail Run)





Date: 2/6/2025

The data represented on this map was obtained with the best methods available. Data is supplied from various sources and accuracy may be out of the City of Rockwall's control. The verification of accuracy and / or content lies entirely with the end user. The City of Rockwall does not guarantee the accuracy of contained information. All information is provided 'As Is' with no warranty being made, either expressed or implied.

Rochell Rd  
Guadalupe Dr to Poplar Point Dr



Date: 2/6/2025

The data represented on this map was obtained with the best methods available. Data is supplied from various sources and accuracy may be out of the City of Rockwell's control. The verification of accuracy and / or content lies entirely with the end user. The City of Rockwell does not guarantee the accuracy of contained information. All information is provided 'As Is' with no warranty being made, either expressed or implied.

Rochell Rd  
Poplar Point Dr to SH 276

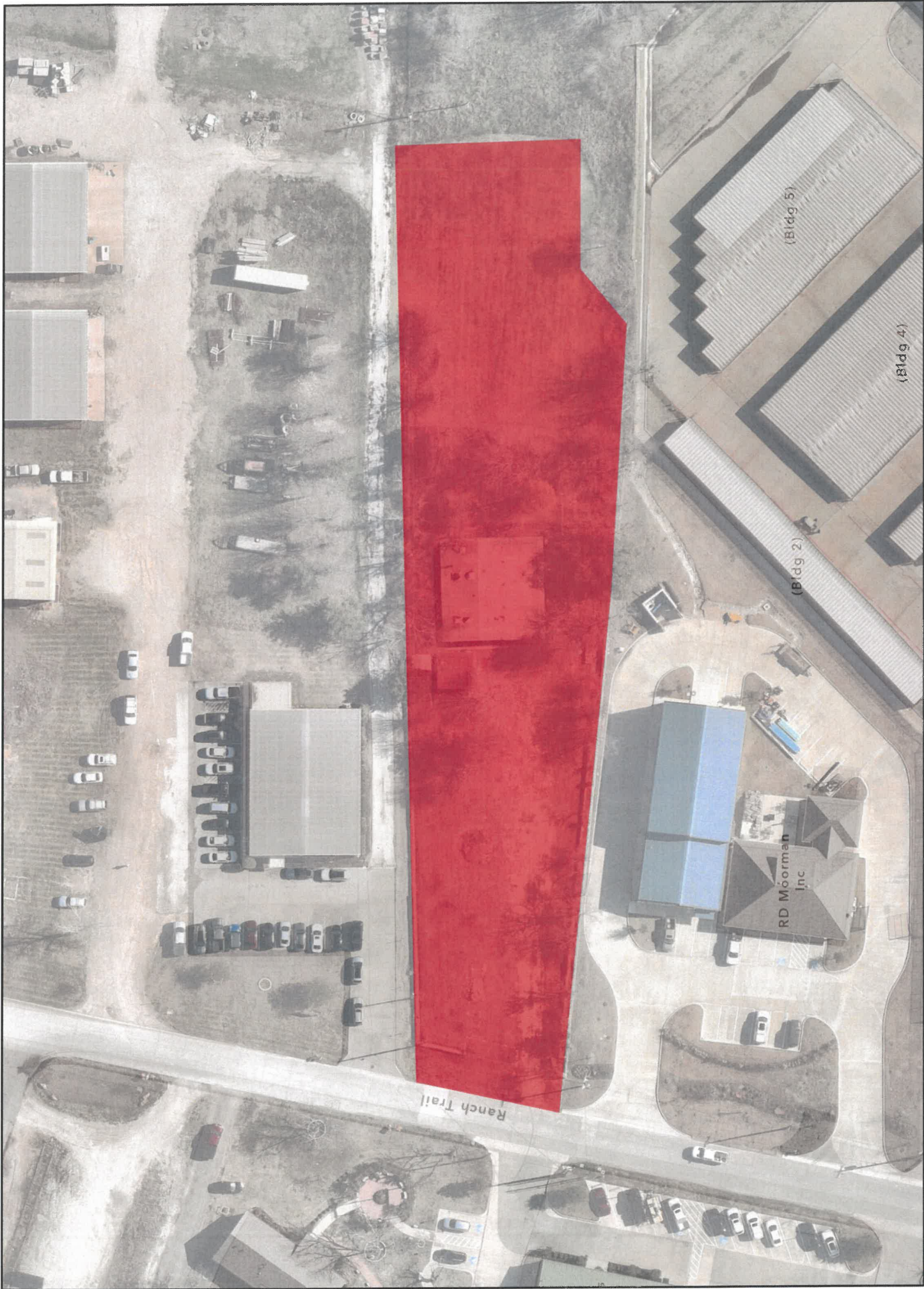


# ROW Hill Bed 205 @ Quail Run (2004 N Goliad St)

The data represented on this map was obtained with the best methods available. Data is supplied from various sources and accuracy may be out of the City of Rockwall's control. This map is for informational purposes only and does not constitute any warranty, express or implied, by the City of Rockwall. The City of Rockwall does not guarantee the accuracy of contained information. All information is provided 'AS IS' with no warranty being made, either expressed or implied.

Date: 2/6/2025





City of  
Rockwall

Date: 2/6/2025

The data represented on this map was obtained with the best methods available. Data is supplied from various sources and accuracy may be out of the City of Rockwall's control. It is the user's responsibility to verify the accuracy of the data with the City of Rockwall. The City of Rockwall does not warrant the accuracy of contained information. All information is provided 'AS IS' with no warranty being made, either expressed or implied.

SWAT House





TL Townsend Dr  
IH30 to Mannheim Dr

The data represented on this map was obtained with the best methods available. Data is supplied from various sources and accuracy may be out of the City of Rockwall's control. The verification of accuracy and / or content lies entirely with the end user. The City of Rockwall does not guarantee the accuracy of the information. All information provided 'AS IS' with no warranty being made, either expressed or implied.

Date: 2/6/2025



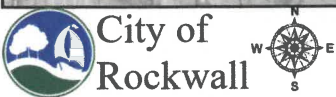


The data represented on this map was obtained with the best methods available. Data is supplied from various sources and accuracy may be out of the City of Rockwall's control. The verification of accuracy and / or content lies entirely with the user. The City of Rockwall does not warrant the accuracy of contained information. All information is provided 'As Is' with no warranty being made, either expressed or implied.



Date: 2/6/2025

Trend Tower



Date: 2/6/2025

The data represented on this map was obtained with the best methods available. Data is supplied from various sources and accuracy may be out of the City of Rockwall's control. The verification of accuracy and / or content lies entirely with the end user. The City of Rockwall does not guarantee the accuracy of contained information. All information is provided 'As Is' with no warranty being made, either expressed or implied.

North Country Water Tower